



Global Quality Benchmark



UNDERMOUNT
SLIDE SERIES

D-MOTION

Soft-close and silent system

A Smooth Drawer



- DTC D-motion undermount slide, silent and soft-close
- Partial extension, Full extension, With peg/locking devices, A variety of options for users.
- Highly stable construction, verified durability



Quietness



Intelligence



Durability



Eco-Friendliness

D-MOTION

DS80 Series Full Extension Undermount Slides with Locking Device



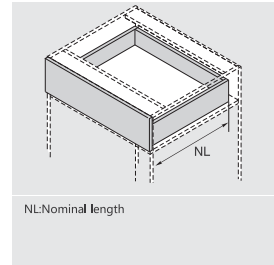
PRODUCT



DESCRIPTION

- Load capacity: 35kg
- Finish: zink plated
- Length: 250-600mm, full extension
- Silent system guarantees smooth run without noise
- 2D adjustment, up&down: 0-3mm, side: ± 1.5mm
- 3D adjustment, up&down: 0-3mm, side: ± 1.5mm, depth: 0-3mm
- Maximum drawer side thickness: 19mm

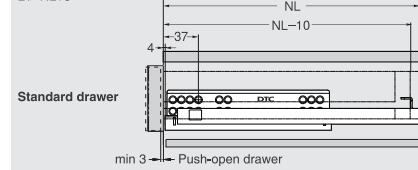
SPACE REQUIREMENT



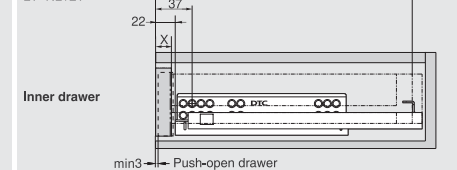
PLANNING

Installation Dimensions(mm)

NL=Nominal Slide Length
 LT=Internal Cabinet Depth
 LT=NL+3



NL=Nominal Slide Length
 LT=Internal Cabinet Depth
 LT=NL+21



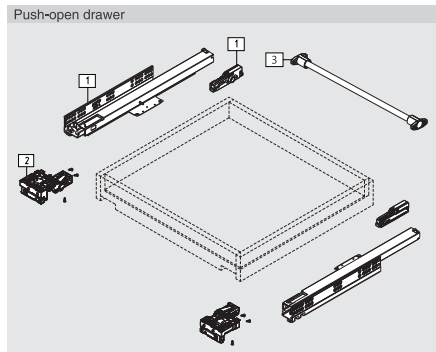
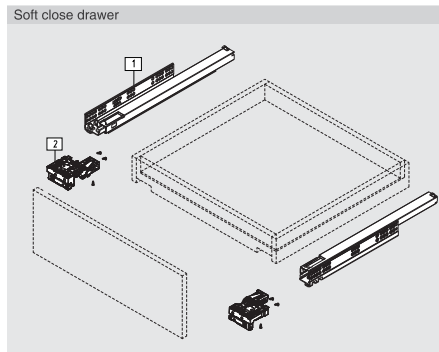
SOFT CLOSE DRAWER/PUSH-OPEN DRAWER

1 Slides (left/right)					
Pre-zinc Steel (F02)					
NL	Soft close Item No.	Set/ctn	Push-open Item No.	Set/ctn	
250mm	DS80250H		DF80250H	10	
270mm	DS80270H		DF80270H	10	
300mm	DS80300H		DF80300H	10	
350mm	DS80350H		DF80350H	10	
400mm	DS80400H		DF80400H	10	
450mm	DS80450H		DF80450H	10	
500mm	DS80500H		DF80500H	10	
550mm	DS80550H		DF80550H	10	
600mm	DS80600H		DF80600H	10	

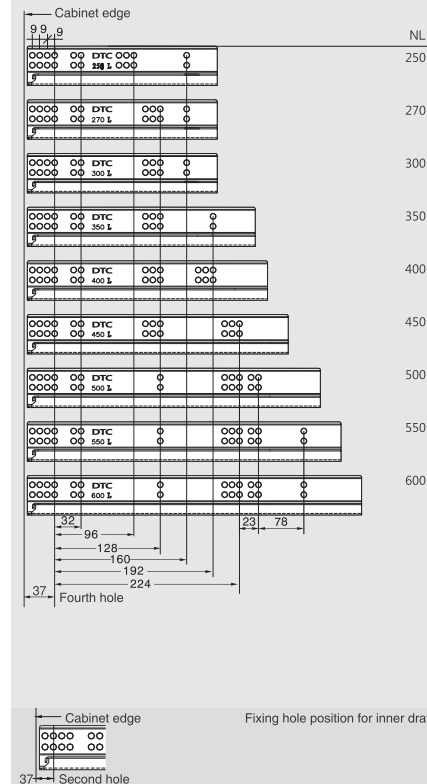
2D Locking Device (Left/Right)	
Grey(H11)	
Item No.	0DSD03-A

3D Locking Device (Left/Right)	
Grey(H11)	
Item No.	0DSD04-A

3 Rod for Push-open Synchronization (For cutting to size, 1100mm, Cutting: Internal cabinet width LW-180)	
Item No.	HT0FH02

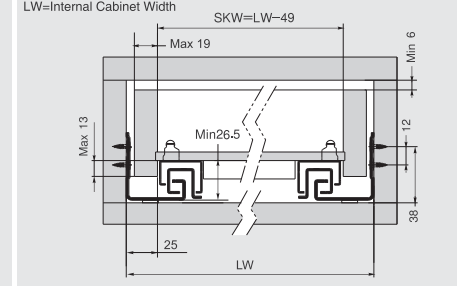


Screw Positions of the Slides(mm)

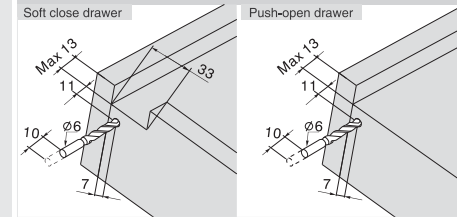


Installation Dimensions(mm)

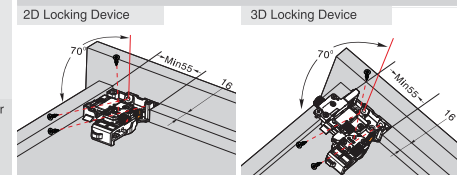
SKW=Internal Drawer Width
 LW=Internal Cabinet Width



Drawer Back Preparation(mm)



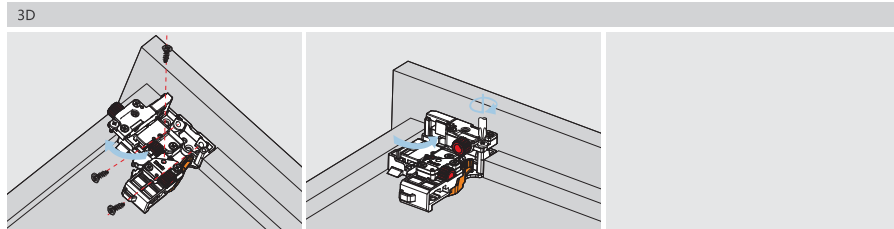
Locking Device Installation(mm)



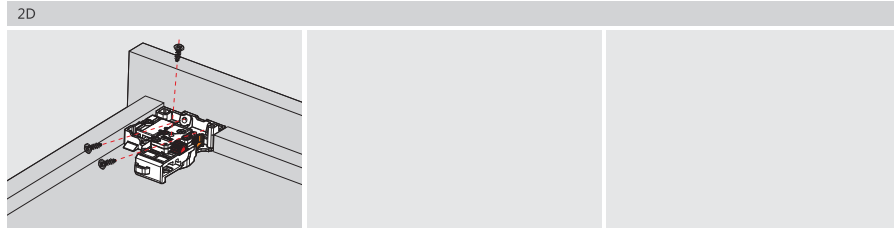
Nexus Enterprises

ASSEMBLY AND ADJUSTMENT

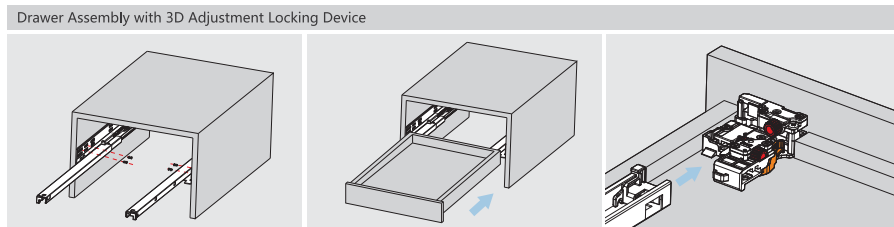
Assembly and Adjustment (for DS series)



Move out the adjusting part and fix the locking device onto the drawer bottom.
Put the adjusting part back and tighten the screws.

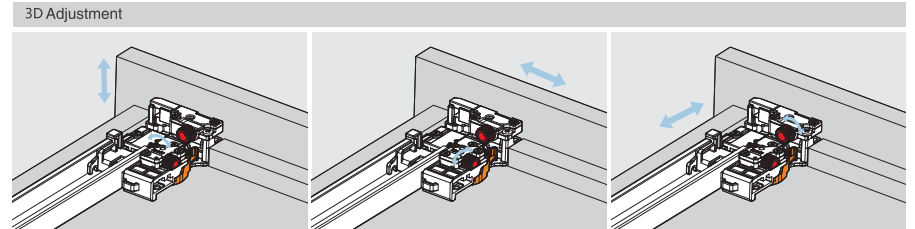


Fix the locking device onto the drawer bottom.



Fix the slide onto the cabinet.

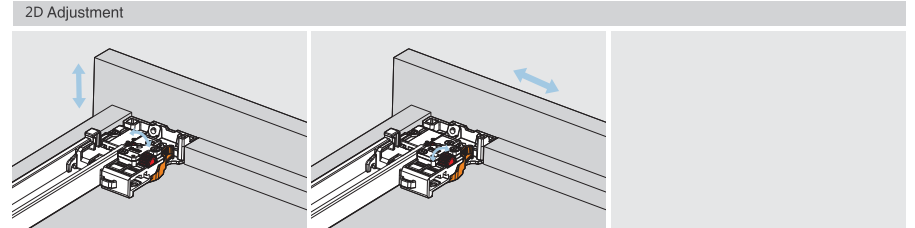
Lay the drawer bottom onto the slide then push the drawer into the cabinet.



Up&down adjustment

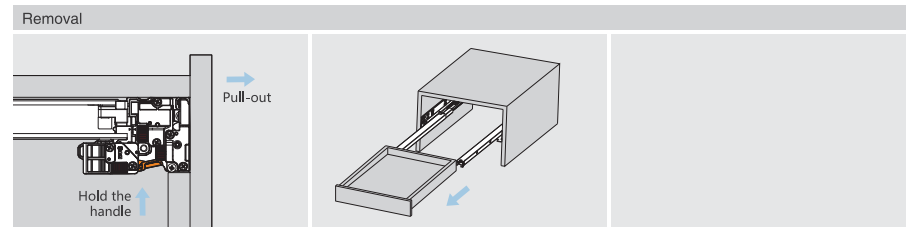
Side adjustment

Depth adjustment



Up&down adjustment

Side adjustment



For removal, hold the handle and pull out the drawer.

Nexus Enterprises

D-MOTION

SS80 Series Full Extension Undermount Slides with Locking Device



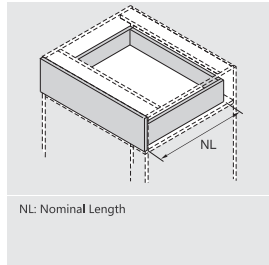
PRODUCT



DESCRIPTION

- Load capacity: 35kg
- Finish: zink plated
- Length: 250-600mm
- Full extension
- Tool free assembly and removal of drawer
- Silent system guarantees smooth run without noise
- Drawer up&down adjustment: 0-+3mm
- Maximum drawer side thickness: 19mm

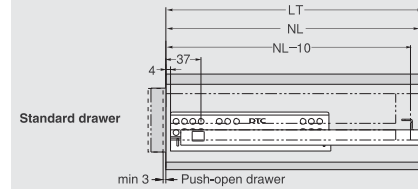
SPACE REQUIREMENT



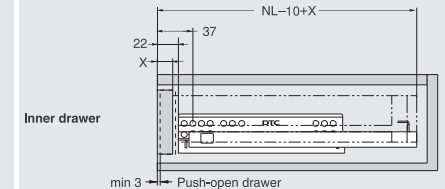
PLANNING

Installation Dimensions(mm)

NL=Nominal Slide Length LT=Internal Cabinet Depth LT=NL+3



NL=Nominal Slide Length LT=Internal Cabinet Depth LT=NL+21

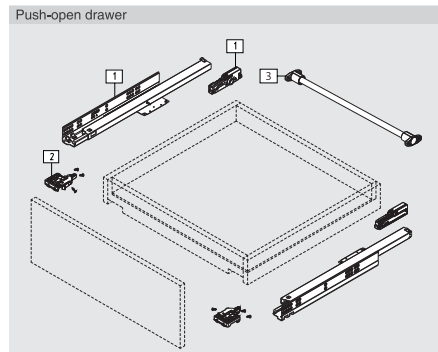
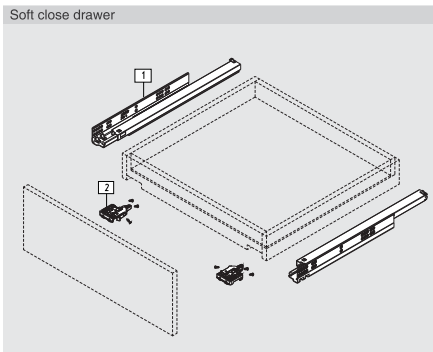


SOFT CLOSE DRAWER / PUSH-OPEN DRAWER

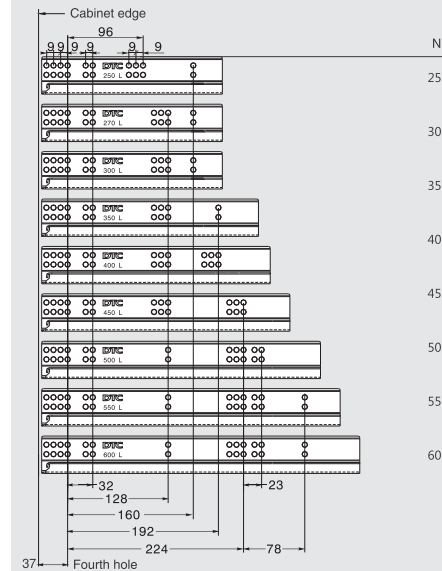
1		Slides (left/right)	
Pre-zinc Steel (F02)			
NL	Soft Close Item No.	Set/ctn	Push-open Item No.
250mm	SS80250H1	10	FF80250HX
270mm	SS80270H1	10	FF80270HX
300mm	SS80300H1	10	FF80300HX
350mm	SS80350H1	10	FF80350HX
400mm	SS80400H1	10	FF80400HX
450mm	SS80450H1	10	FF80450HX
500mm	SS80500H1	10	FF80500HX
550mm	SS80550H1	10	FF80550HX
600mm	SS80600H1	10	FF80600HX

2		Locking Device (left/right)	
Grey(H11)			
Item No.		05SLD01-A	

3		Rod for Push-open Synchronization	
/For cutting to size, 1100mm. Cutting: Internal cabinet width LW-180			
Item No.		HT0FH02	



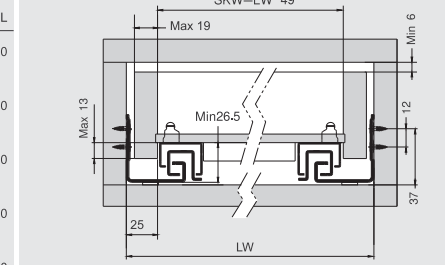
Screw Positions of the Slides(mm)



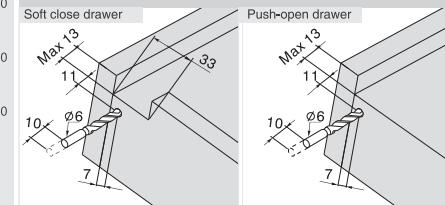
Installation Dimensions(mm)

SKW=Internal Drawer Width

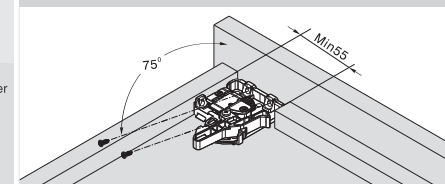
LW=Internal Cabinet Width



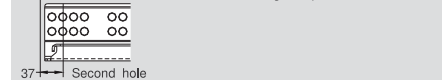
Drawer Back Preparation(mm)



Locking Device Installation(mm)



Fixing hole position for inner drawer



Nexus Enterprises

D-MOTION

SS10C Series Full Extension Undermount Slides with Peg



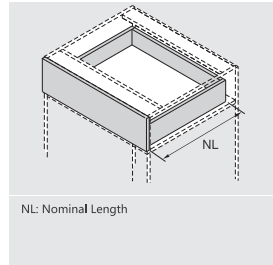
PRODUCT



DESCRIPTION

- Load capacity: 35kg
- Finish: zink plated
- Length: 250-600mm
- Full extension
- Tool free assembly and removal of drawer
- Silent system guarantees smooth run without noise
- Drawer up&down adjustment: 0~+4mm
- Maximum drawer side thickness: 16mm

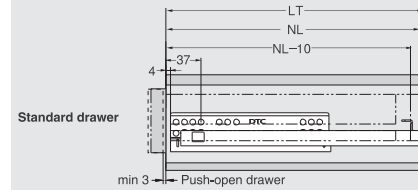
SPACE REQUIREMENT



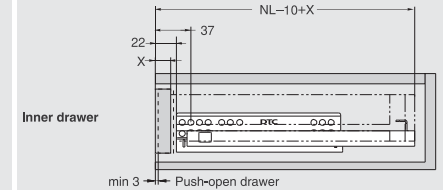
PLANNING

Installation Dimensions(mm)

NL=Nominal Slide Length LT=Internal Cabinet Depth LT=NL+3



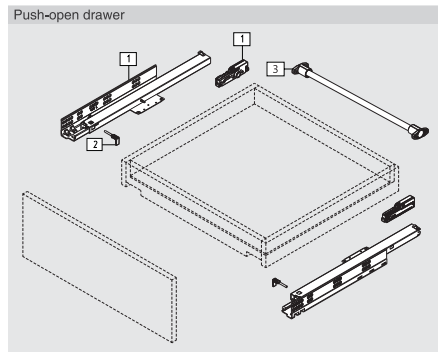
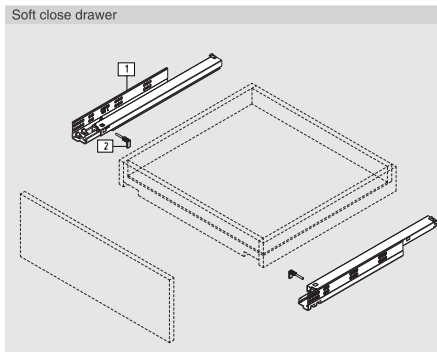
NL=Nominal Slide Length LT=Internal Cabinet Depth LT=NL+21



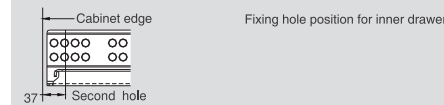
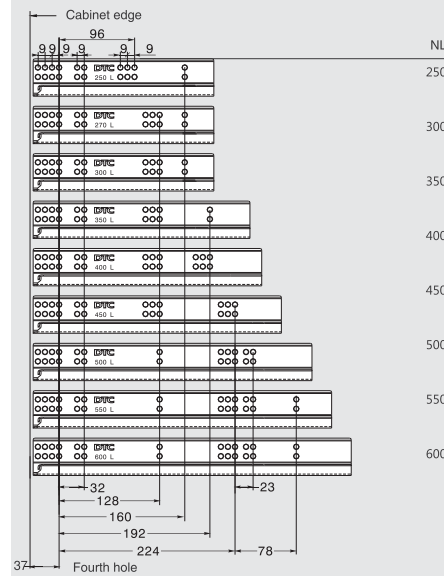
SOFT CLOSE DRAWER / PUSH-OPEN DRAWER

1	Slides (left/right)	
	Pre-zinc Steel (F02)	
NL	Soft Close Item No.	Set/ctn
	Push-open Item No.	Set/ctn
250mm	SS10C250H1	10
	FF10C250HX	6
270mm	SS10C270H1	10
	FF10C270HX	6
300mm	SS10C300H1	10
	FF10C300HX	6
350mm	SS10C350H1	10
	FF10C350HX	6
400mm	SS10C400H1	10
	FF10C400HX	6
450mm	SS10C450H1	10
	FF10C450HX	6
500mm	SS10C500H1	10
	FF10C500HX	6
550mm	SS10C550H1	10
	FF10C550HX	6
600mm	SS10C600H1	10
	FF10C600HX	6

2	Locking Pin	
	Grey(H11)	
	Item No.	SJ501
3	Rod for Push-open Synchronization /For cutting to size,1100mm.Cutting:Internal cabinet width LW-172	
	Item No.	HT0FH02



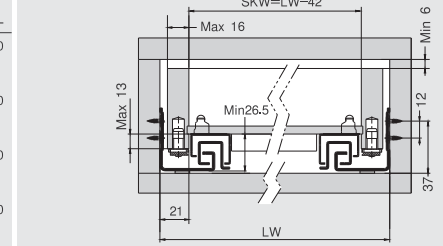
Screw Positions of the Slides(mm)



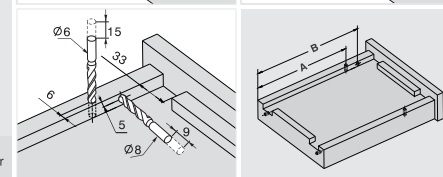
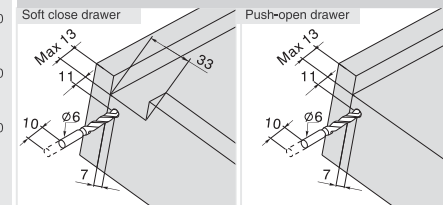
Installation Dimensions(mm)

SKW=Internal Drawer Width

LW=Internal Cabinet Width



Drawer Back Preparation(mm)



NL (mm)	250	270	300	350	400	450	500	550	600
A (mm)	190	205	245	270	305	330	355	390	415
B (mm)	200.5	215.5	255.5	280.5	319.5	369.5	419.5	469.5	519.5

D-MOTION

SS80C Series Full Extension Undermount Slides with Peg



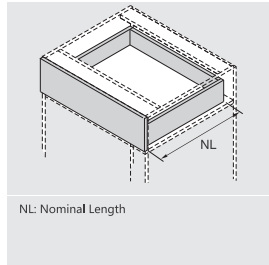
PRODUCT



DESCRIPTION

- Load capacity: 35kg
- Finish: zink plated
- Length: 250-600mm
- Full extension
- Tool free assembly and removal of drawer
- Silent system guarantees smooth run without noise
- Drawer up&down adjustment: 0~+4mm
- Maximum drawer side thickness:19mm

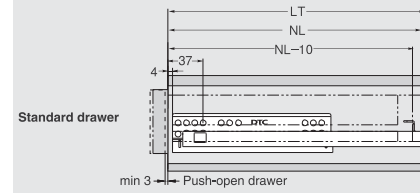
SPACE REQUIREMENT



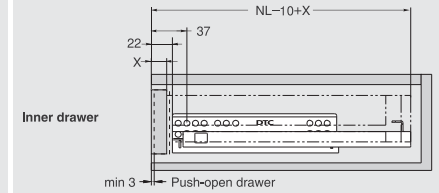
PLANNING

Installation Dimensions(mm)

NL=Nominal Slide Length LT=Internal Cabinet Depth LT=NL+3



NL=Nominal Slide Length LT=Internal Cabinet Depth LT=NL+21

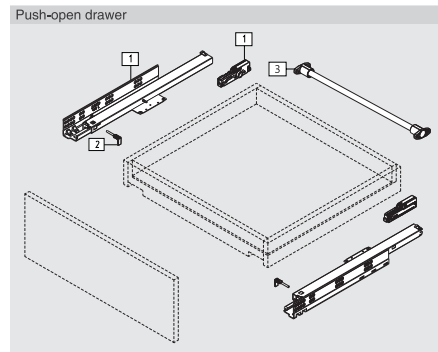
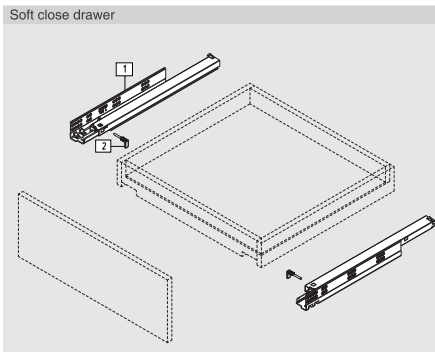


SOFT CLOSE DRAWER / PUSH-OPEN DRAWER

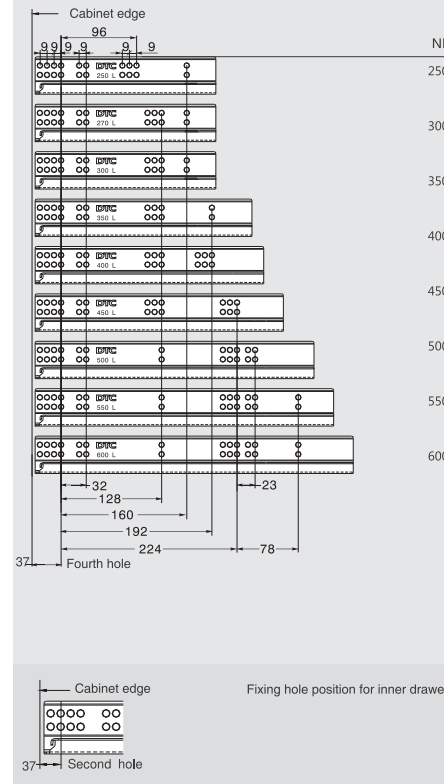
1	Slides (left/right)	
	Pre-zinc Steel (F02)	
NL	Soft Close Item No.	Set/ctn
	Push-open Item No.	Set/ctn
250mm	SS80C250H1	10
	FF80C250HX	6
270mm	SS80C270H1	10
	FF80C270HX	6
300mm	SS80C300H1	10
	FF80C300HX	6
350mm	SS80C350H1	10
	FF80C350HX	6
400mm	SS80C400H1	10
	FF80C400HX	6
450mm	SS80C450H1	10
	FF80C450HX	6
500mm	SS80C500H1	10
	FF80C500HX	6
550mm	SS80C550H1	10
	FF80C550HX	6
600mm	SS80C600H1	10
	FF80C600HX	6

2	Locking Pin	
	Grey(H11)	
	Item No.	SJ501

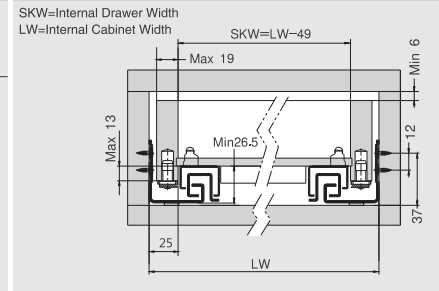
3	Rod for Push-open Synchronization	
	/For cutting to size,1100mm.Cutting:Internal cabinet width LW-180	
	Item No.	HT0FH02



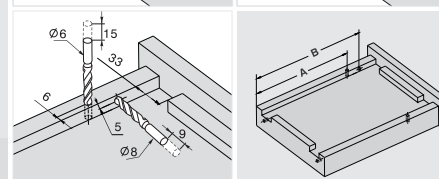
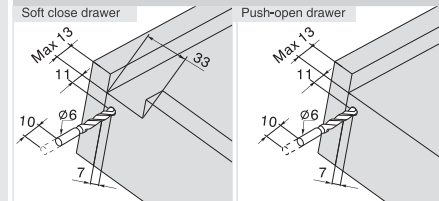
Screw Positions of the Slides(mm)



Installation Dimensions(mm)



Drawer Back Preparation(mm)



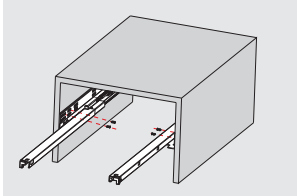
NL (mm)	250	270	300	350	400	450	500	550	600
A (mm)	190	205	245	270	305	330	355	390	415
B (mm)	200.5	215.5	255.5	280.5	319.5	369.5	419.5	469.5	519.5

ASSEMBLY AND ADJUSTMENT

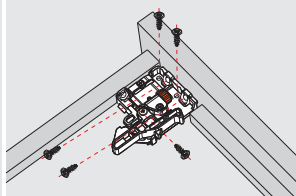
Assembly and Adjustment
(for D-MOTION Full Extension Undermount Slides)



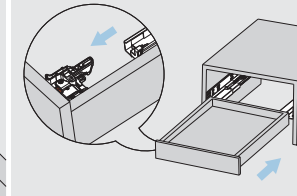
Drawer Assembly with Locking Device



Fix the slide onto the cabinet.

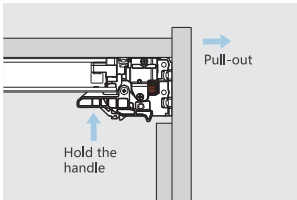


Fix the locking device onto the drawer bottom.

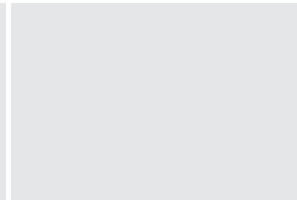
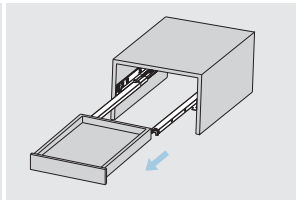


Lay the drawer bottom onto the slide then push the drawer into the cabinet.

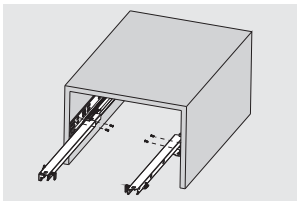
Removal with Locking Device



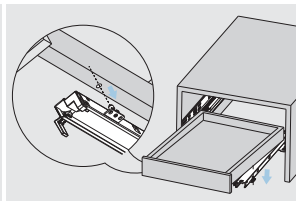
For removal, hold the handle and pull out the drawer.



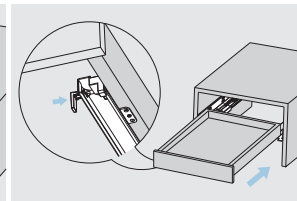
Drawer Assembly with Peg



Fix the slide onto the cabinet.

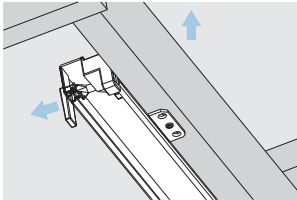


Pull out the drawer member of the slide from the cabinet, lay the drawer onto the slide.

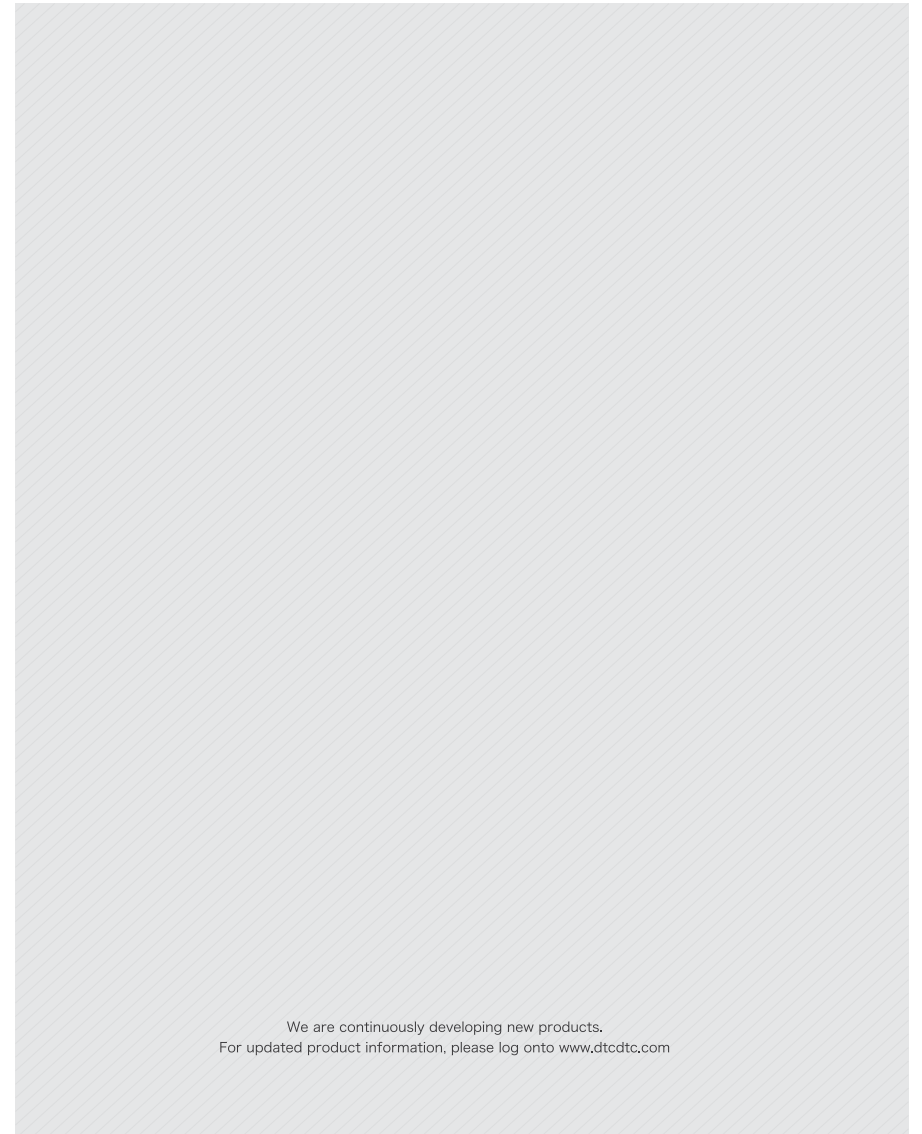
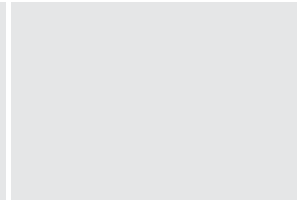
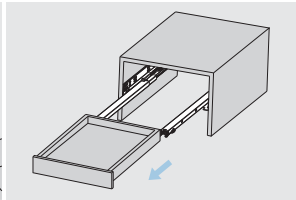


Press the locking pin into the drawer side to lock the position of the drawer.

Removal with Peg



For removal, pull out the locking pin from the drawer side. Lift the drawer and pull it out from the cabinet.



We are continuously developing new products.
For updated product information, please log onto www.dtcctc.com

D-MOTION

G10C Series Partial Extension Undermount Slides with Locking Device



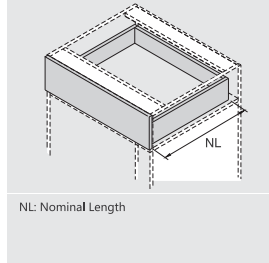
PRODUCT



DESCRIPTION

- Load capacity: 25kg
- Finish: zink plated
- Length: 250-600mm
- Partial extension
- Drawer up&down adjustment: 0~+3mm
- Tool free assembly and removal of drawer
- Silent system guarantees smooth run without noise
- Maximum drawer side thickness: 16mm

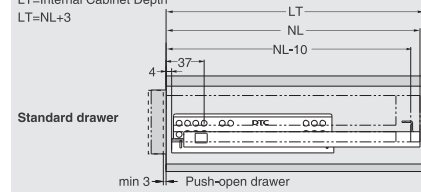
SPACE REQUIREMENT



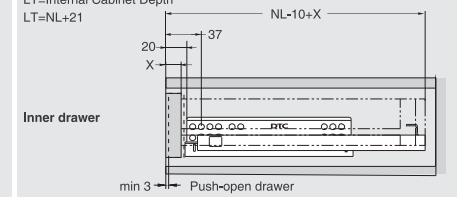
PLANNING

Installation Dimensions(mm)

NL=Nominal Slide Length
LT=Internal Cabinet Depth
LT=NL+3



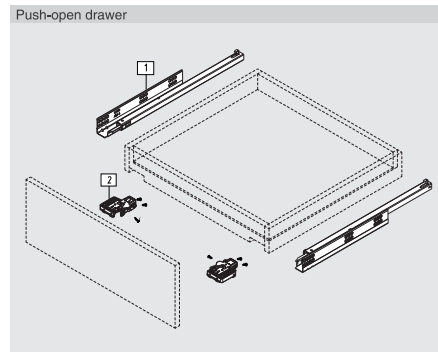
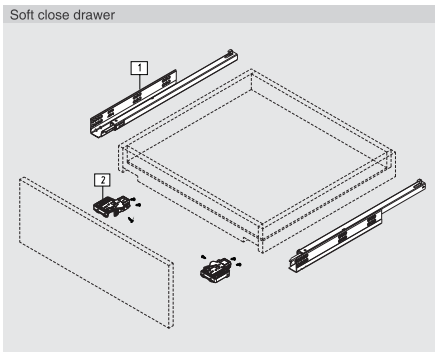
NL=Nominal Slide Length
LT=Internal Cabinet Depth
LT=NL+21



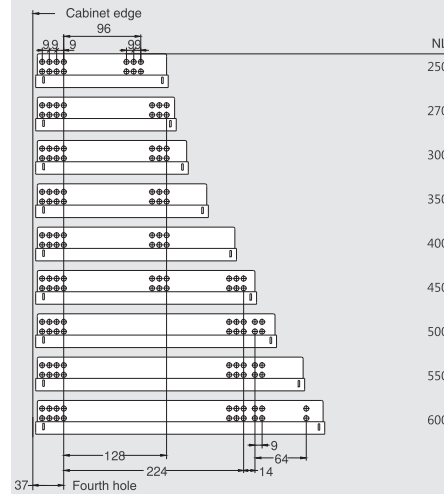
SOFT CLOSE DRAWER/PUSH-OPEN DRAWER

1		Slides (left/right)	
Pre-zinc Steel (F02)			
NL	Soft close item No.	Push-open item No.	Set/ctn
250mm	G10C250H	G02A250	10
270mm	G10C270H	G02A270	10
300mm	G10C300H	G02A300	10
350mm	G10C350H	G02A350	10
400mm	G10C400H	G02A400	10
450mm	G10C450H	G02A450	10
500mm	G10C500H	G02A500	10
550mm	G10C550H	G02A550	10
600mm	G10C600H	G02A600	10

2		Locking Device (left/right)	
Grey(H11)			
Item No.	0GLD01-A		

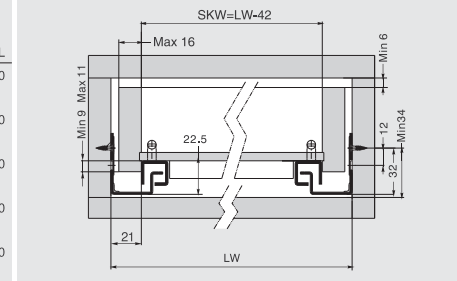


Screw Positions of the Slides(mm)

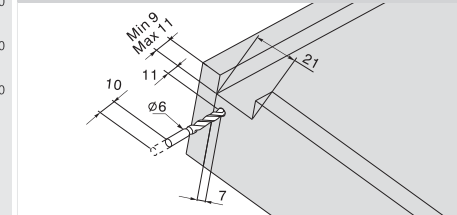


Installation Dimensions(mm)

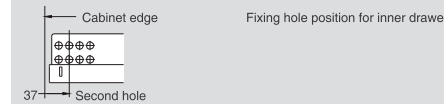
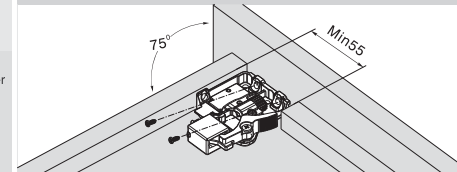
LW=Internal Cabinet Width



Drawer Back Preparation(mm)



Locking Device Installation(mm)



D-MOTION

G80C Series Partial Extension Undermount Slides with Locking Device



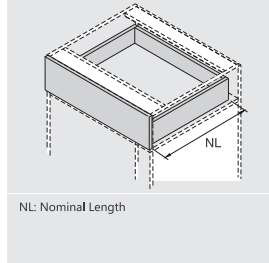
PRODUCT



DESCRIPTION

- Load capacity: 25kg
- Finish: zink plated
- Length: 250-600mm
- Partial extension
- Drawer up&down adjustment: 0-+3mm
- Tool free assembly and removal of drawer
- Silent system guarantees smooth run without noise
- Maximum drawer side thickness: 19mm

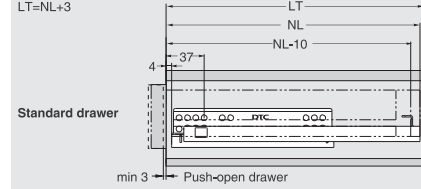
SPACE REQUIREMENT



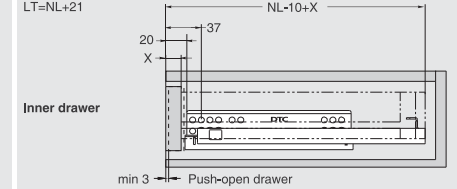
PLANNING

Installation Dimensions(mm)

NL=Nominal Slide Length
 LT=Internal Cabinet Depth
 LT=NL+3



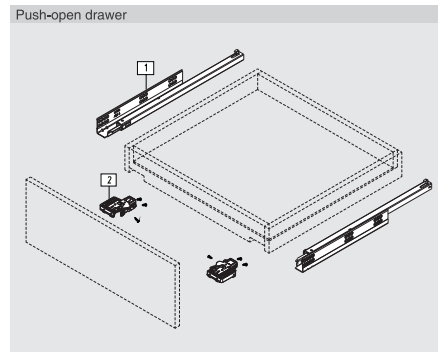
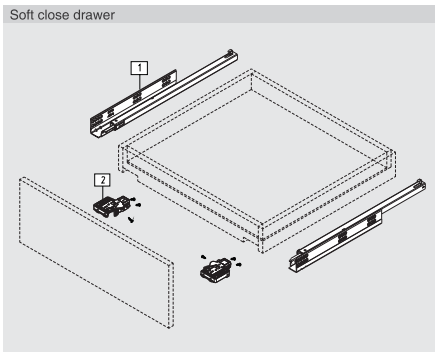
NL=Nominal Slide Length
 LT=Internal Cabinet Depth
 LT=NL+21



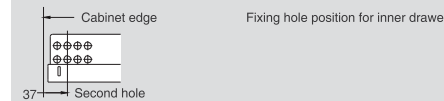
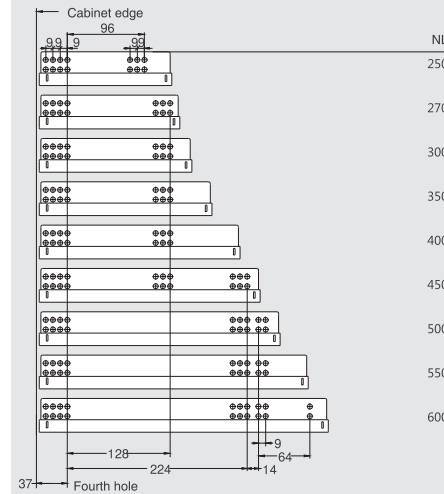
SOFT CLOSE DRAWER/PUSH-OPEN DRAWER

1		Slides (left/right)	
Pre-zinc Steel (F02)			
NL	Soft close Item No.	Push-open Item No.	Set/ctn
250mm	G80C250H	G07A250	10
270mm	G80C270H	G07A270	10
300mm	G80C300H	G07A300	10
350mm	G80C350H	G07A350	10
400mm	G80C400H	G07A400	10
450mm	G80C450H	G07A450	10
500mm	G80C500H	G07A500	10
550mm	G80C550H	G07A550	10
600mm	G80C600H	G07A600	10

2		Locking Device (left/right)	
Grey(H11)			
Item No.	0GLD01-A		

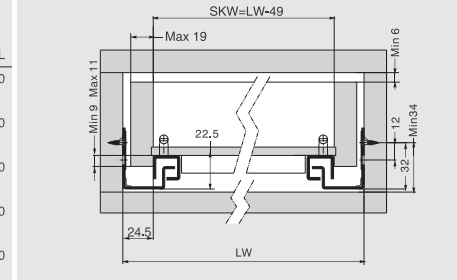


Screw Positions of the Slides(mm)

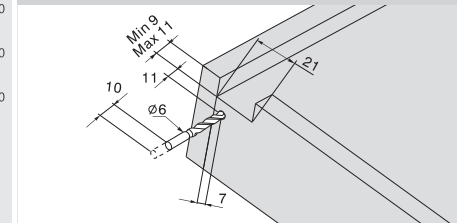


Installation Dimensions(mm)

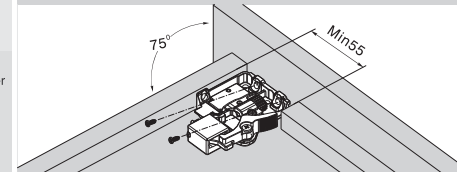
LW=Internal Cabinet Width



Drawer Back Preparation(mm)



Locking Device Installation(mm)



D-MOTION

G10 Series Partial Extension Undermount Slides with Peg



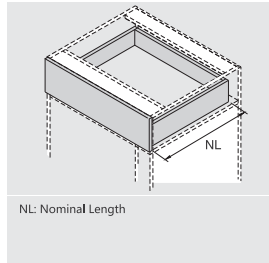
PRODUCT



DESCRIPTION

- Load capacity: 25kg
- Finish: zink plated
- Length: 250-600mm
- Partial extension
- Drawer up&down adjustment: 0-+4mm
- Tool free assembly and removal of drawer
- Silent system guarantees smooth run without noise
- Maximum drawer side thickness: 16mm

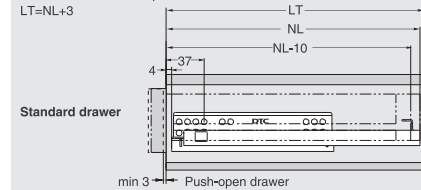
SPACE REQUIREMENT



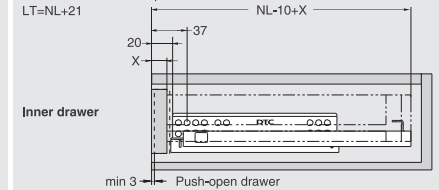
PLANNING

Installation Dimensions(mm)

NL=Nominal Slide Length
 LT=Internal Cabinet Depth
 LT=NL+3



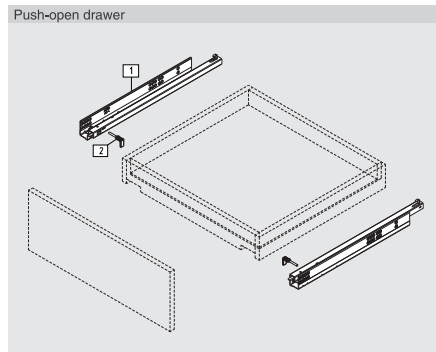
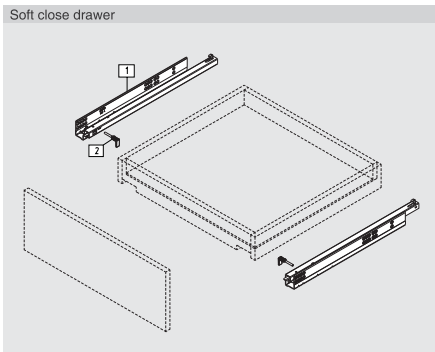
NL=Nominal Slide Length
 LT=Internal Cabinet Depth
 LT=NL+21



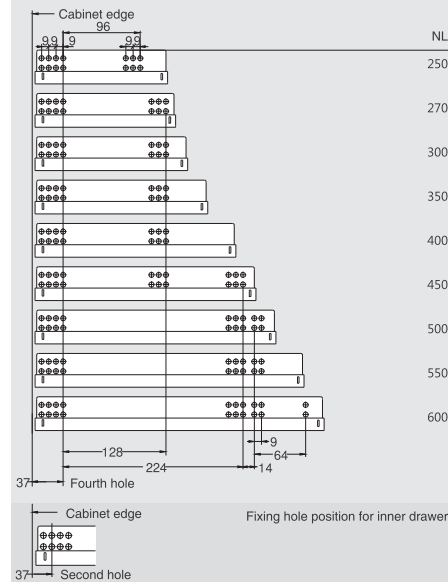
SOFT CLOSE DRAWER/PUSH-OPEN DRAWER

1		Slides (left/right)	
Pre-zinc Steel (F02)			
NL	Soft close item No.	Push-open item No.	Set/ctn
250mm	G10250H	G02250	10
270mm	G10270H	G02270	10
300mm	G10300H	G02300	10
350mm	G10350H	G02350	10
400mm	G10400H	G02400	10
450mm	G10450H	G02450	10
500mm	G10500H	G02500	10
550mm	G10550H	G02550	10
600mm	G10600H	G02600	10

2		Locking Pin	
Grey(H11)			
Item No.	GJ502		

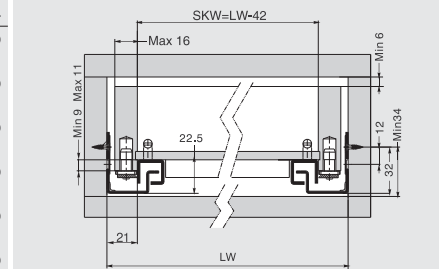


Screw Positions of the Slides(mm)

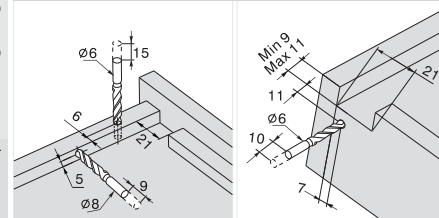


Installation Dimensions(mm)

LW=Internal Cabinet Width



Drawer Preparation(mm)



Soft close drawer

NL (mm)	A (mm)	B (mm)
250	220	188
270	230	198
300	245	213
350	270	238
400	305	273
450	330	298
500	355	323
550	390	358
600	415	383

Push-open drawer

NL (mm)	B (mm)	A (mm)	C (mm)
250	240	221	189
270	260	241	209
300	290	271	239
350	340	321	289
400	390	371	339
450	440	421	389
500	490	471	439
550	540	521	489
600	590	571	539

D-MOTION

G80 Series Partial Extension Undermount Slides with Peg



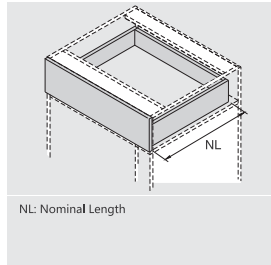
PRODUCT



DESCRIPTION

- Load capacity: 25kg
- Finish: zink plated
- Length: 250-600mm
- Partial extension
- Drawer up&down adjustment: 0~+4mm
- Tool free assembly and removal of drawer
- Silent system guarantees smooth run without noise
- Maximum drawer side thickness: 19mm

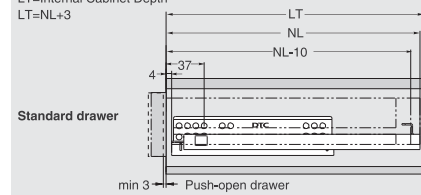
SPACE REQUIREMENT



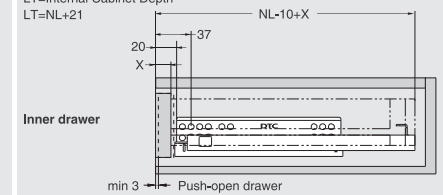
PLANNING

Installation Dimensions(mm)

NL=Nominal Slide Length
 LT=Internal Cabinet Depth
 LT=NL+3



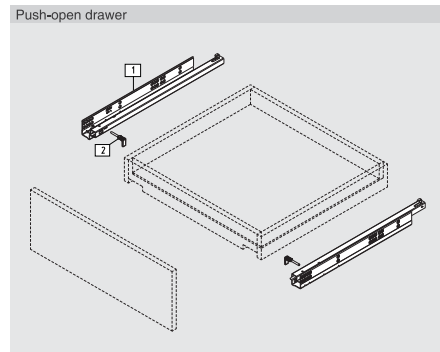
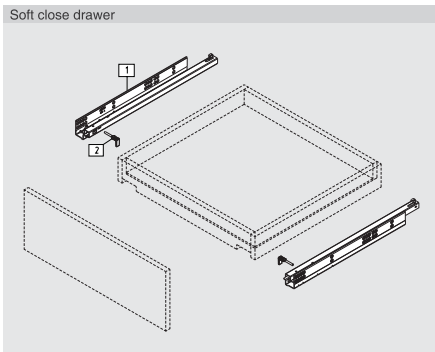
NL=Nominal Slide Length
 LT=Internal Cabinet Depth
 LT=NL+21



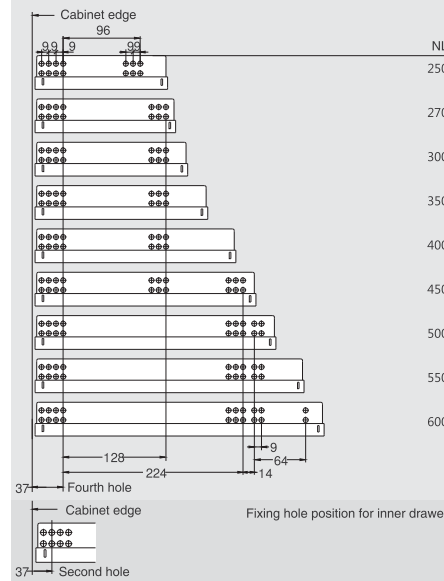
SOFT CLOSE DRAWER/PUSH-OPEN DRAWER

1		Slides (left/right)	
Pre-zinc Steel (F02)			
NL	Soft close Item No.	Push-open Item No.	Set/ctn
250mm	G80250H	G07250	10
270mm	G80270H	G07270	10
300mm	G80300H	G07300	10
350mm	G80350H	G07350	10
400mm	G80400H	G07400	10
450mm	G80450H	G07450	10
500mm	G80500H	G07500	10
550mm	G80550H	G07550	10
600mm	G80600H	G07600	10

2		Locking Pin	
Grey(H11)			
Item No.	GJS02		

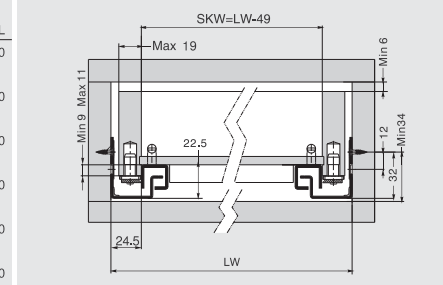


Screw Positions of the Slides(mm)

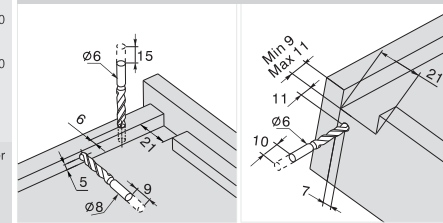


Installation Dimensions(mm)

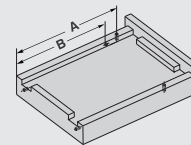
LW=Internal Cabinet Width



Drawer Preparation(mm)

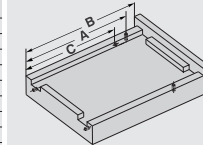


Soft close drawer



NL (mm)	A (mm)	B (mm)
250	220	188
270	230	198
300	245	213
350	270	238
400	305	273
450	330	298
500	355	323
550	390	358
600	415	383

Push-open drawer



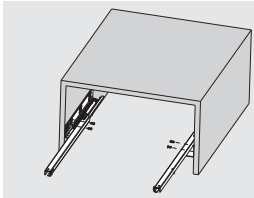
NL (mm)	B (mm)	A (mm)	C (mm)
250	240	221	189
270	260	241	209
300	290	271	239
350	340	321	289
400	390	371	339
450	440	421	389
500	490	471	439
550	540	521	489
600	590	571	539

ASSEMBLY AND ADJUSTMENT

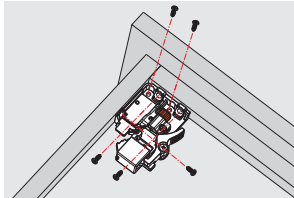
Assembly and Adjustment
(for D-MOTION Partial Extension Undermount Slides)



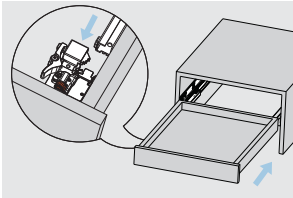
Drawer Assembly with Locking Device



Fix the slide onto the cabinet.

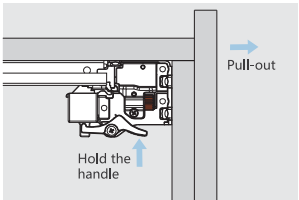


Fix the locking device onto the drawer bottom.

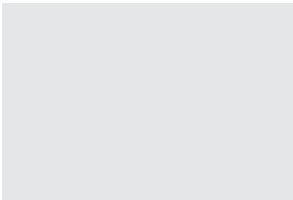
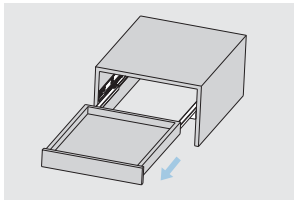


Lay the drawer bottom onto the slide then push the drawer into the cabinet.

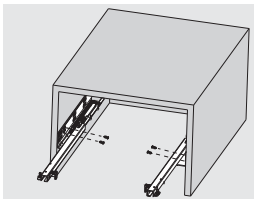
Removal with Locking Device



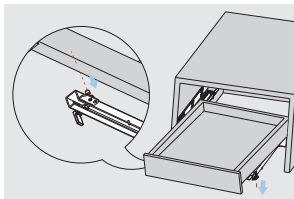
For removal, hold the handle and pull out the drawer.



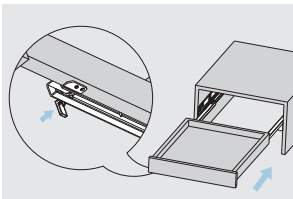
Drawer Assembly with Peg



Fix the slide onto the cabinet.

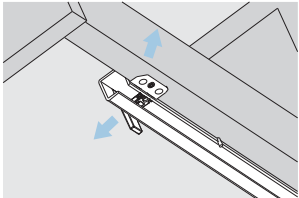


Pull out the drawer member of the slide from the cabinet, lay the drawer onto the slide.

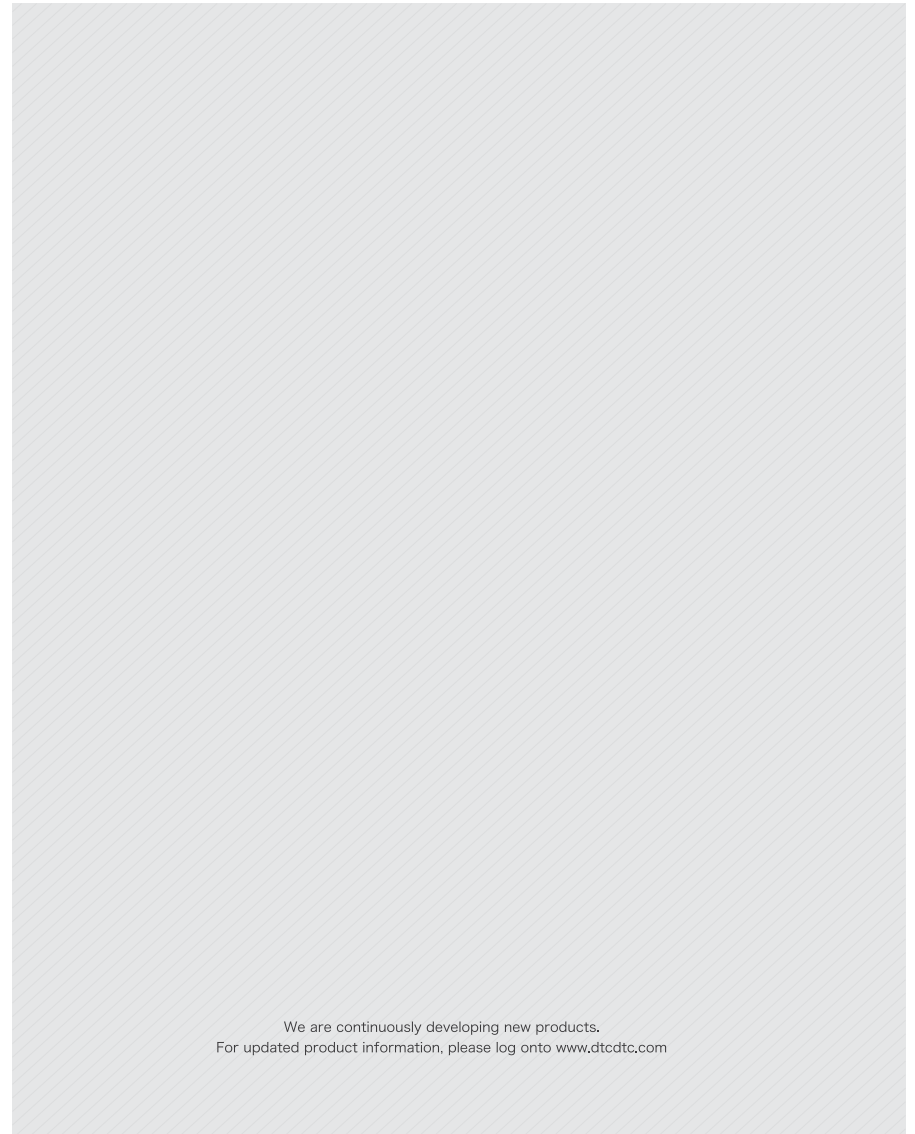
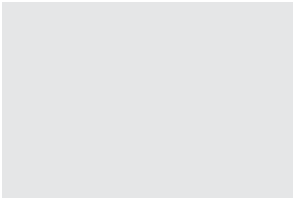
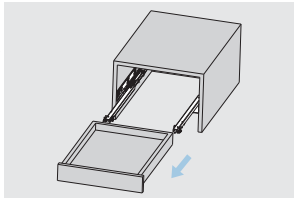


Press the locking pin into the drawer side to lock the position of the drawer.

Removal with Peg



For removal, pull out the locking pin from the drawer side. Lift the drawer and pull it out from the cabinet.



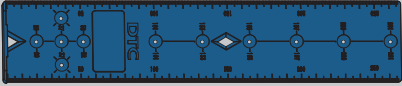
We are continuously developing new products.
For updated product information, please log onto www.dtcctc.com

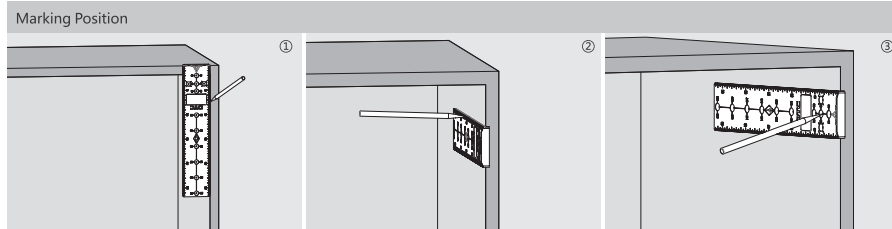
ACCESSORY

Marking Template (for Drawer Slide System)



Order Information

		Universal Marking Template
		Blue (H23)
Item No.		DT02
Pcs/ctn		100

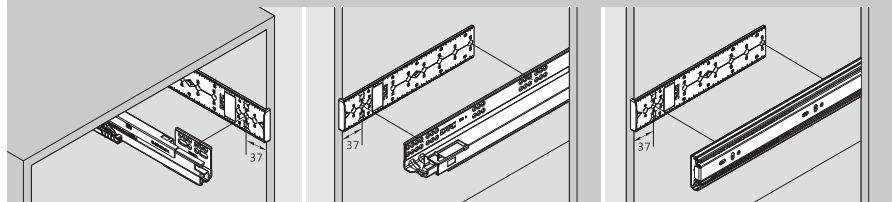


①② Mark the vertical position of mounting hole

③ Mark the longitudinal position of mounting hole

Application

Drawer Slide System: Double-wall Drawer System / Undermount Slide Series / Ball Bearing Slide Series

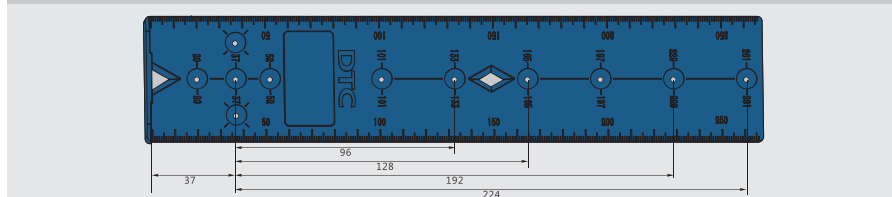


Double-wall Drawer System

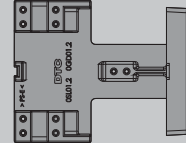
Undermount Slide Series

Ball Bearing Slide Series

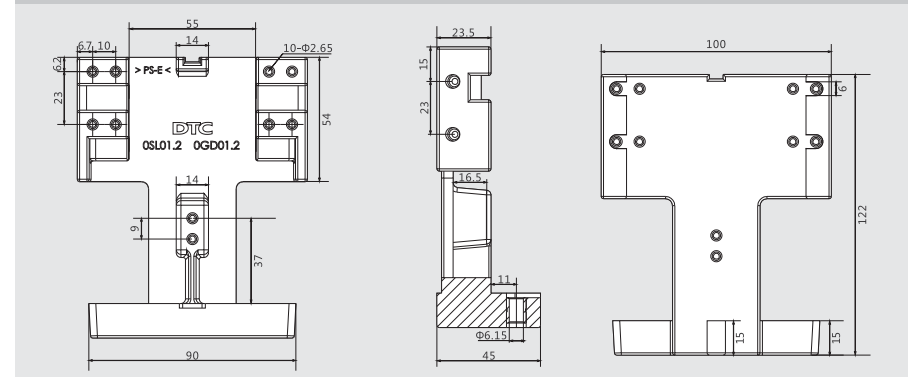
Mounting Hole Positions for Drawer Slide System



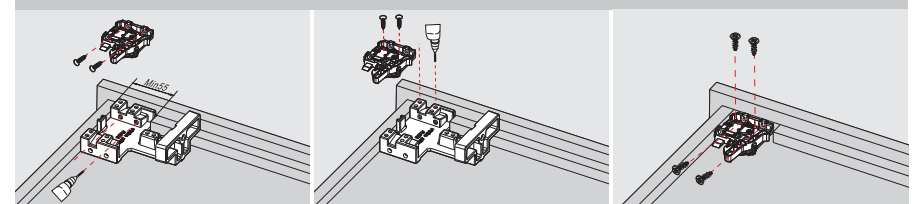
Order Information

		Undermount Slide Drawer Assembly Tool
Item No.		DT01
Pcs/ctn		20

Assembly Tool Dimensions(mm)

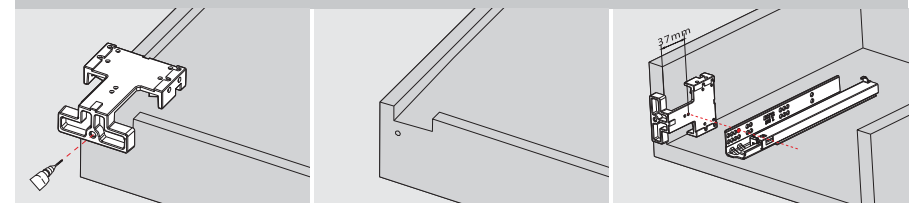


Drawer Assembly



Mark the position of the locking device and fix the locking device onto the drawer bottom

Drawer Assembly



Drill a hole (φ6, depth 10mm)

mark the position of the fourth hole for standard drawer