

LIFTING
SYSTEM

ST Series

TOP-STAYS



TOP-STAYS

The new experience of the lift-up door

Agile and Unconstrained,
Impressive and Elegant



- Easy to open and stays at any desired position, silent and smooth closing, full access to the inside of the cabinet
- Side, height and depth adjustments - 3D front adjustment of both fronts
- Tool free assembly and removal, easy and fast installation



Quietness



Intelligence



Durability



Eco-Friendliness

TOP-STAYS

ST Series Bi-fold Lifting System

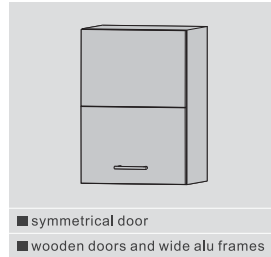


PRODUCT



DESCRIPTION

- Cabinet width up to 1800mm
- Cabinet height:480~1040mm
- 3D front adjustment of both fronts
- Easy to open, and stays at any desired position
- Adjustable soft-closing speed
- Adjustable opening and hovering forces
- Tool free assembly and removal



ORDER INFORMATION

Cabinet height KH(mm)	Door weight incl handle weight (kg)	Item No.
480-529	5.0-10.0(2.5-5.0 to use 1 lift) 9.6-16.0	ST01AL ST01AM
530-589	4.5-8.9(2.3-4.5 to use 1 lift) 8.7-14.4	ST02AL ST02AM
590-649	4.1-8.1 (2.0-4.1 to use 1 lift) 7.8-13.0	ST03AL ST03AM
650-729	3.7-7.2 (1.8-3.7 to use 1 lift) 7.0-11.6 11.5-19.8 3.2-6.5	ST04AL ST04AM ST04AH ST05AL
730-799	6.3-10.6 10.5-18.1(15.7-27.1 to use 3 lift)	ST05AM ST05AH
800-879	5.8-9.6 9.5-16.5(14.2-24.7 to use 3 lift)	ST06AM ST06AH
880-959	5.2-8.8 8.7-15.1(13.0-22.6 to use 3 lift)	ST07AM ST07AH
960-1040	4.8-8.1 8.0-13.9(12.0-20.8 to use 3 lift)	ST08AM ST08AH

Item No.	Set/ctn
ST00BG	100
T00TQ	100
ST00YQ	200

Item No.	Set/ctn
STA685	100
SQ00YQ	200
S15H	1000
STJS02A	20
STJS02B	20
STW100	1000
STW83	1000

ORDER INFORMATION

1x Lift mechanism set	1 X Cover cap set	1 X 120° hinge set	1 X Mounting plate set for 120° hinge	1 X Decoration cover set for hinge arm
1 X Centre hinge set	1 X Mounting plate set for centre hinge	1 X Front mounting plate set	Q4X16mm Q4X38mm 20X16mm wooden screws 10X38mm wooden screws	

Please select the corresponding kit package item No. according to cabinet height, door weight and handle weight

Cabinet height KH(mm)	Door weight incl handle weight (kg)	Kit package item No. (White cap)	Kit package item No. (Grey cap)
480-529	5.0-10.0	ST01AL02A	ST01AL02B
	9.6-16.0	ST01AM02A	ST01AM02B
530-589	4.5-8.9	ST02AL02A	ST02AL02B
	8.7-14.4	ST02AM02A	ST02AM02B
590-649	4.1-8.1	ST03AL02A	ST03AL02B
	7.8-13.0	ST03AM02A	ST03AM02B
650-729	3.7-7.2	ST04AL02A	ST04AL02B
	7.0-11.6	ST04AM02A	ST04AM02B
	11.5-19.8	ST04AH02A	ST04AH02B
	3.2-6.5	ST05AL02A	ST05AL02B
730-799	6.3-10.6	ST05AM02A	ST05AM02B
	10.5-18.1	ST05AH02A	ST05AH02B
800-879	5.8-9.6	ST06AM02A	ST06AM02B
	9.5-16.5	ST06AH02A	ST06AH02B
	5.2-8.8	ST07AM02A	ST07AM02B
880-959	8.7-15.1	ST07AH02A	ST07AH02B
	4.8-8.1	ST08AM02A	ST08AM02B
960-1040	8.0-13.9	ST08AH02A	ST08AH02B

Nexus Enterprises

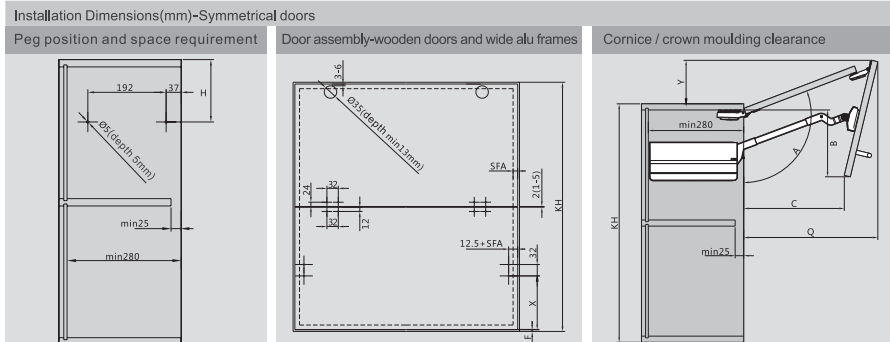
TOP-STAYS

ST Series Bi-fold Lifting System

TOP-STAYS

Assembly, Removal and Adjustment (for ST series Bi-fold Lifting System)

PLANNING

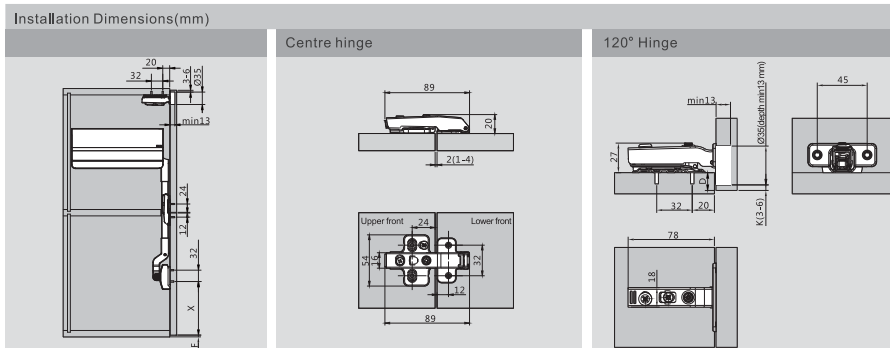


Cabinet height KH(mm)	H(mm)
480-589	KHx0.3-28
590-1040	KHx0.3-57

E.G.
Cabinet height KH=500
H=500x0.3-28=122
Cabinet height KH=800
H=800x0.3-57=183

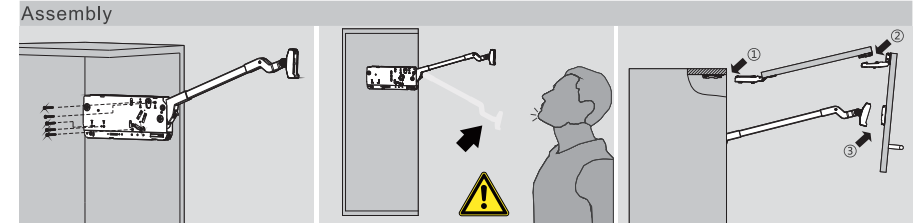
Cabinet height KH(mm)	X(mm)					
	KH-H-S-F					
480-1040	S(mm)	A(°)	B(mm)	C(mm)	Q(mm)	Y(mm)
480-529	301	~115-105	109-156	257-210	278-323	109-76
530-589	326	~115-105	123-180	280-223	300-354	121-77
590-649	356	~115-105	141-194	308-224	327-384	132-84
650-729	386	~115-102	160-228	335-226	355-428	144-74
730-799	426	~115-105	181-250	372-293	390-450	162-108
800-879	461	~115-105	202-280	404-318	422-494	176-115
880-959	501	~115-105	225-301	440-361	458-529	194-134
960-1040	541	~115-105	245-335	476-405	493-566	214-148

SFA=Door overlay on the side panel
F=Gap



Number of hinges needed for each door:
Use 3 hinge for cabinet width over 1200mm and door weight over 12kg.
Use 4 hinge for cabinet width over 1800mm and door weight over 20kg.

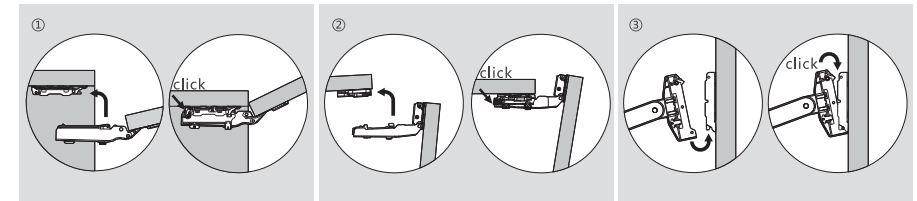
Drilling distance K(mm)	3	4	5	6
Door overlay D(mm)	15	16	17	18



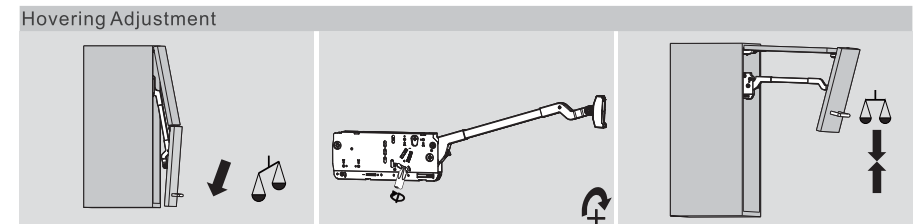
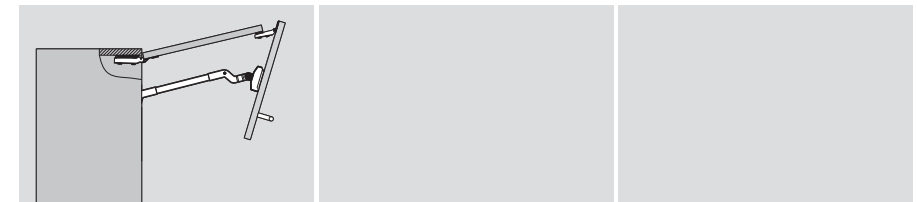
Assembly

The arm of this device could spring up and cause injury. Do not push the arm down without door attached.

Door Assembly



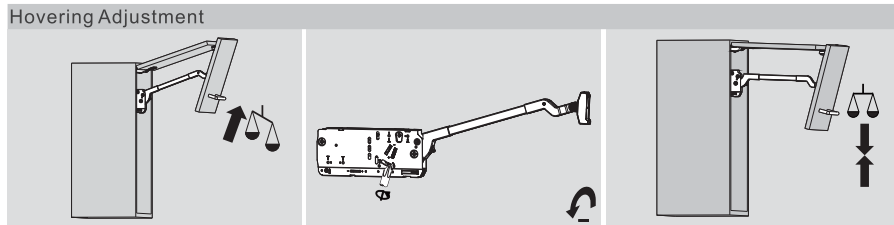
Door Assembly



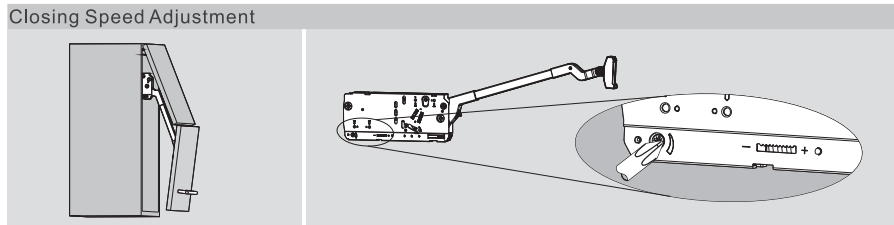
Adjustment

TOP-STAYS

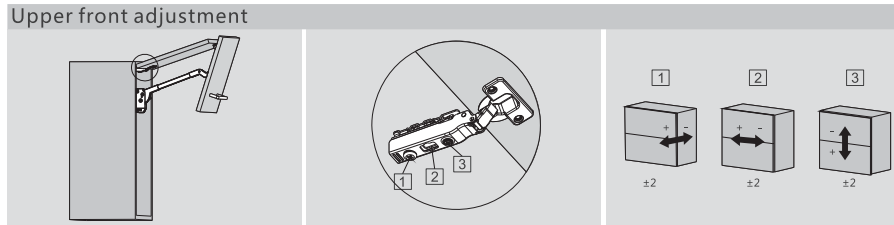
Assembly , Removal and Adjustment(for ST series Bi-fold Lifting System)



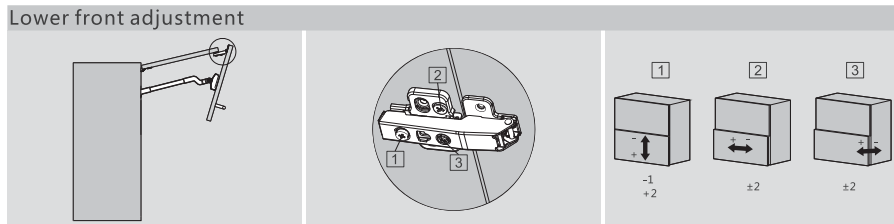
Adjustment



+ Increasing soft-closing time (turn adjustment screw counter-clockwise)
 ** Reducing soft-closing time (turn adjustment screw clockwise)



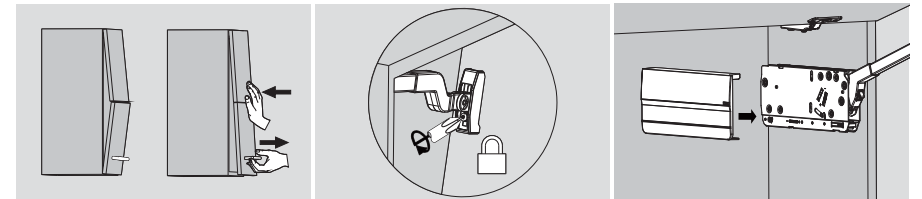
120° hinge



Centre hinge

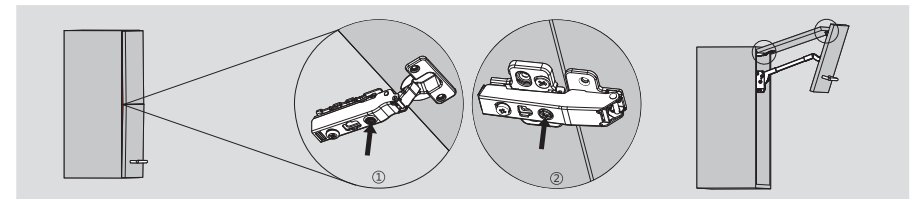


+ Loose the screw properly when the automatic positioning Adjust positions of the doors is too tight to move during door adjustment
 *- Tighten the screw properly when the automatic positioning is too loose and doesn't work during door adjustment

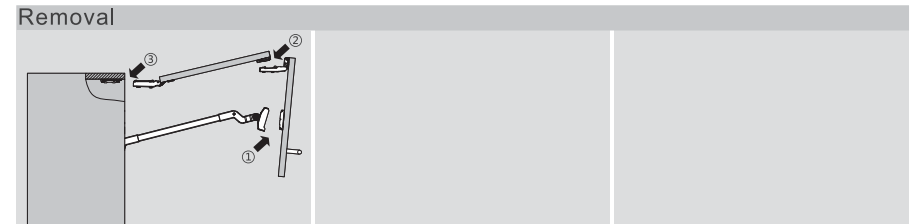


Adjust positions of the doors

Lock screw



If there is small gap between the doors and the cabinet side; fine-tune the positions of the doors with the adjustment screws



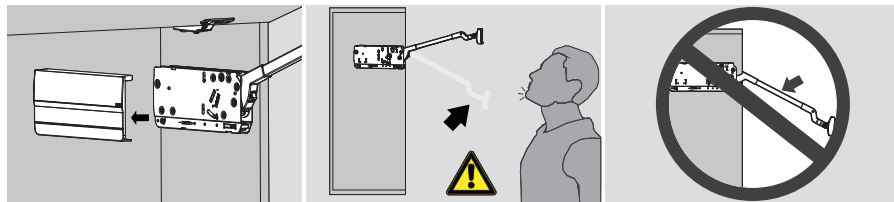
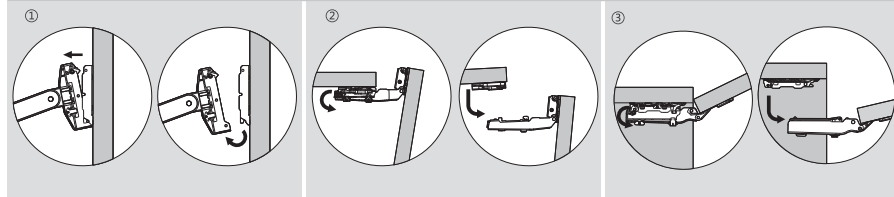
Nexus Enterprises

TOP-STAYS

Assembly , Removal and Adjustment(for ST series Bi-fold Lifting System)



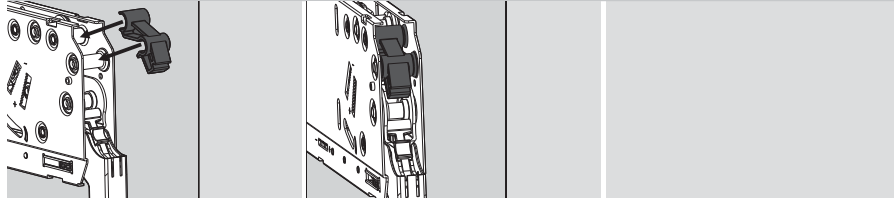
Removal



The arm of this device could spring up and cause injury!

Do not push the arm down without door attached

Opening angle restriction clip



Assembly

Nexus Enterprises

We are continuously developing new products.
For updated product information, please log onto www.dtcdtc.com